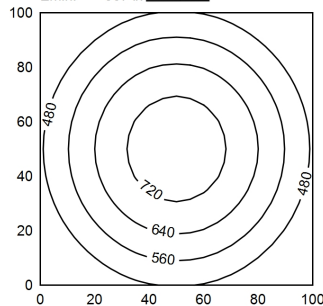


100 x 100 cm
Em: 572 lx
Emax: 768 lx
Emin: 367 lx



Light source	LED
Work equipment	Without
Connected load	22 - 26 V; DC
Power consumption	ca. 25 W
Luminous flux	approx. 1.900 lm
Luminous efficiency ¹⁾	approx. 76 lm/W
Light type/-color	Daylight
Colour temperatur	approx. 5.600 K
Color rendering index	CRI ≥ 80
Light distribution	Direct; Symmetric
Beam angle	90°
Chromaticity tolerance LED	< 5 SDCM
Glare control	optical film
Luminance (L65)	≤ 10.000 cd/m ²
UGR class (4H 8H; EN 12464-1)	≤ 25
System of protection/Class	IP 68 - 1 m / IPX9; III
Technology	Two-stage switchable
Operation	External
Housing	Aluminium; Anodised; Aluminium coloured anodised Borosilicate
Light source cover	
Mains lead	Built-in plug; RSFPM 5/0.5 M
Design	mounted version
Fastening	Mounting rail; Tap hole 2xM6
Maximum ambient temperature	60 °C
Decorative contrast side parts	Metallic silver
EAN	4013330016548
Weight without/incl. packaging	ca. 4,8 kg; 6,1 kg
Packaging dimensions	ca. 460 mm; 170 mm; 72 mm
Special features	Light forming; Connection on the rear side; Eco mode

¹⁾ For luminaires with separate control gear, the luminous efficacy refers to the luminaire head without control g